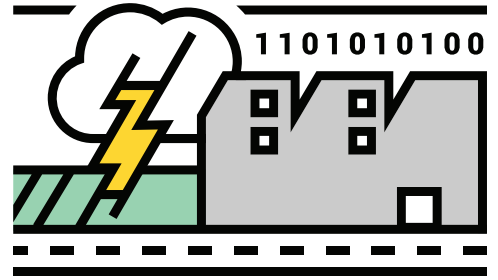


Business Recovery Resources



LONG-TERM NEEDS

For longer term support to help stabilize your business into the future, consider the following steps and resources:

INSURANCE



Review your coverage with your agent and reassess the type and amount of coverage you need for your business.

Have questions or complaints about your insurance coverage?

- **Oregon:** Department of Consumer and Business Services Division of Financial Regulation dfr.oregon.gov or 888-877-4894

PROPERTY DAMAGE OR LOSS



If you lost any structures during a disaster, please reach out to your **county planning department prior to rebuilding.**

- Baker County
541-523-8129
- Union County
541-963-1014
- Wallowa County
541-426-4543 x1168

If you have lost any structures, you may be entitled to property **tax relief.** Please contact your **county assessors' office:**

- Baker County
509-523-8203
- Union County
509-963-1002
- Wallowa County
509-426-4543 x1147

TECHNICAL ASSISTANCE



Small Business Development Center provides technical assistance to businesses in developing a recovery plan and assessing economic injury. Counseling is confidential and at no charge to the affected businesses.

- Eastern Oregon University SBDC:
bizcenter.org/centers/eastern-oregon-sbdc/
- Baker and Wallowa counties SBDC:
bizcenter.org/centers/blue-mountain-sbdc/

STAY CONNECTED



Keep in touch with your fellow business owners, chambers, and networks for ideas and collaborations.

Contact your local, regional, and state-wide tourism marketing organizations for marketing support and tourism promotion strategies moving forward.

- Eastern Oregon Visitors Association: eova.com

Find more resources on the NEOEDD website: neoedd.org/
Connect to 2-1-1 or 211.org for additional services not found here.